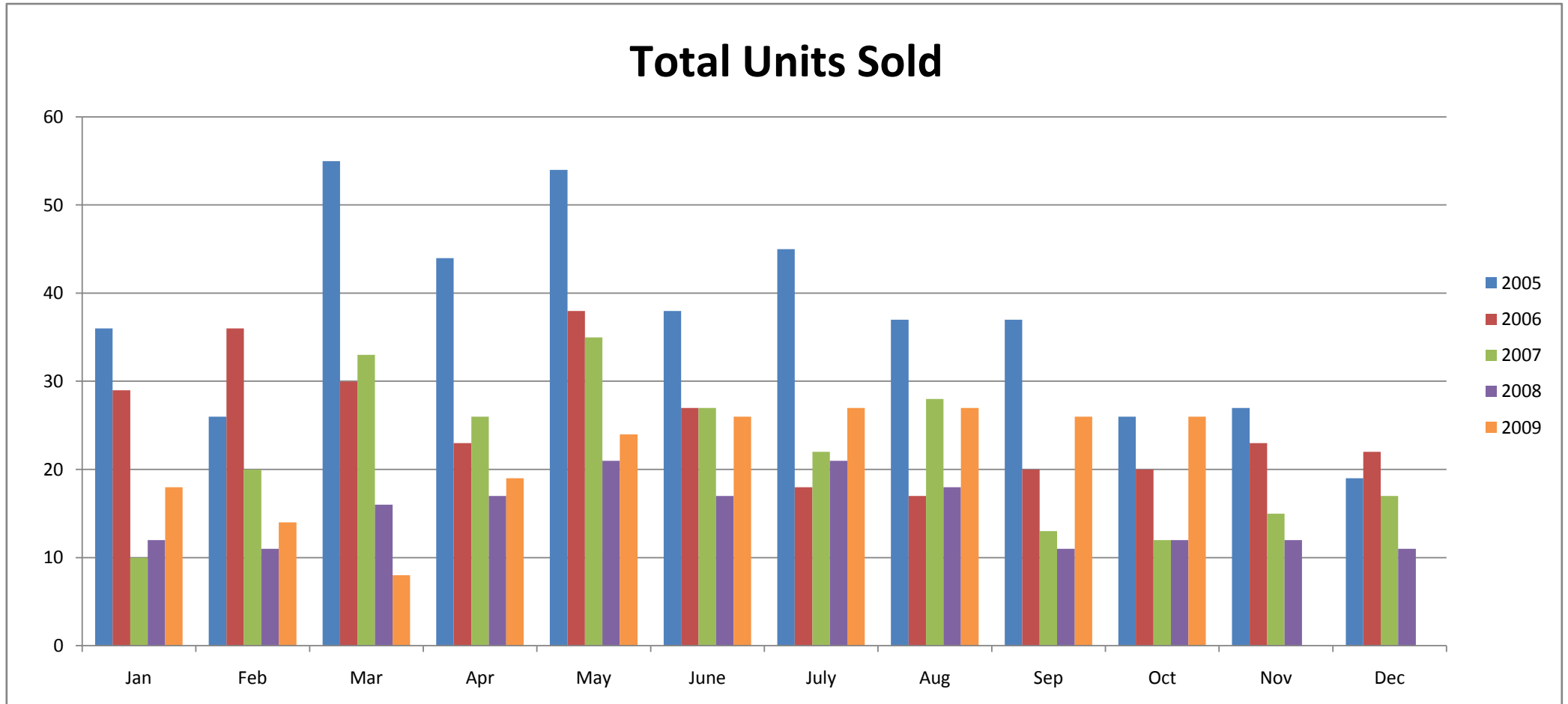


Paradise Valley, Arizona Residential Sales Statistics

January 2005 - Present



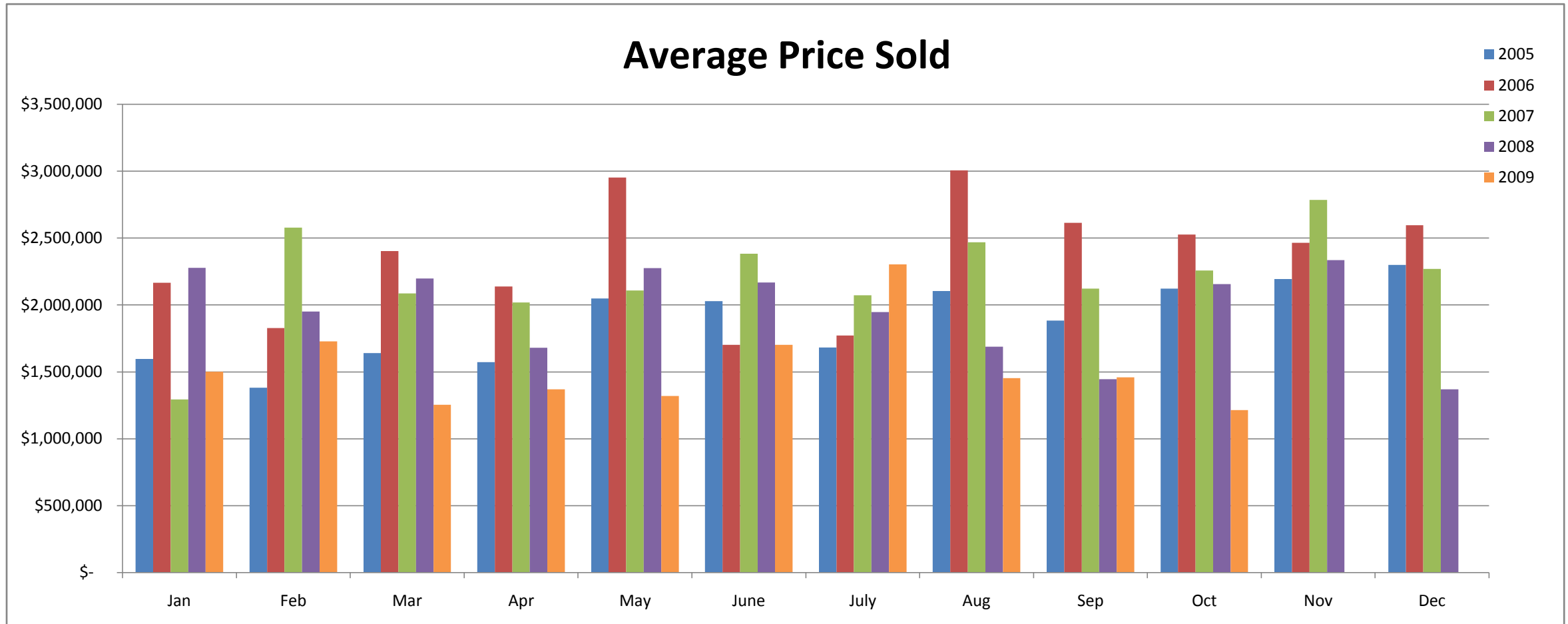
Total Units Sold

	Jan	Feb	Mar	Apr	May	June	July	Aug	Sep	Oct	Nov	Dec	Annual Totals
2005	36	26	55	44	54	38	45	37	37	26	27	19	444
2006	29	36	30	23	38	27	18	17	20	20	23	22	303
2007	10	20	33	26	35	27	22	28	13	12	15	17	258
2008	12	11	16	17	21	17	21	18	11	12	12	11	179
2009	18	14	8	19	24	26	27	27	26	26			215

Data compiled from the Arizona Regional Multiple Listing Service.
All information provided is deemed reliable but is not guaranteed and should be independently verified.

Paradise Valley, Arizona Residential Sales Statistics

January 2005 - Present



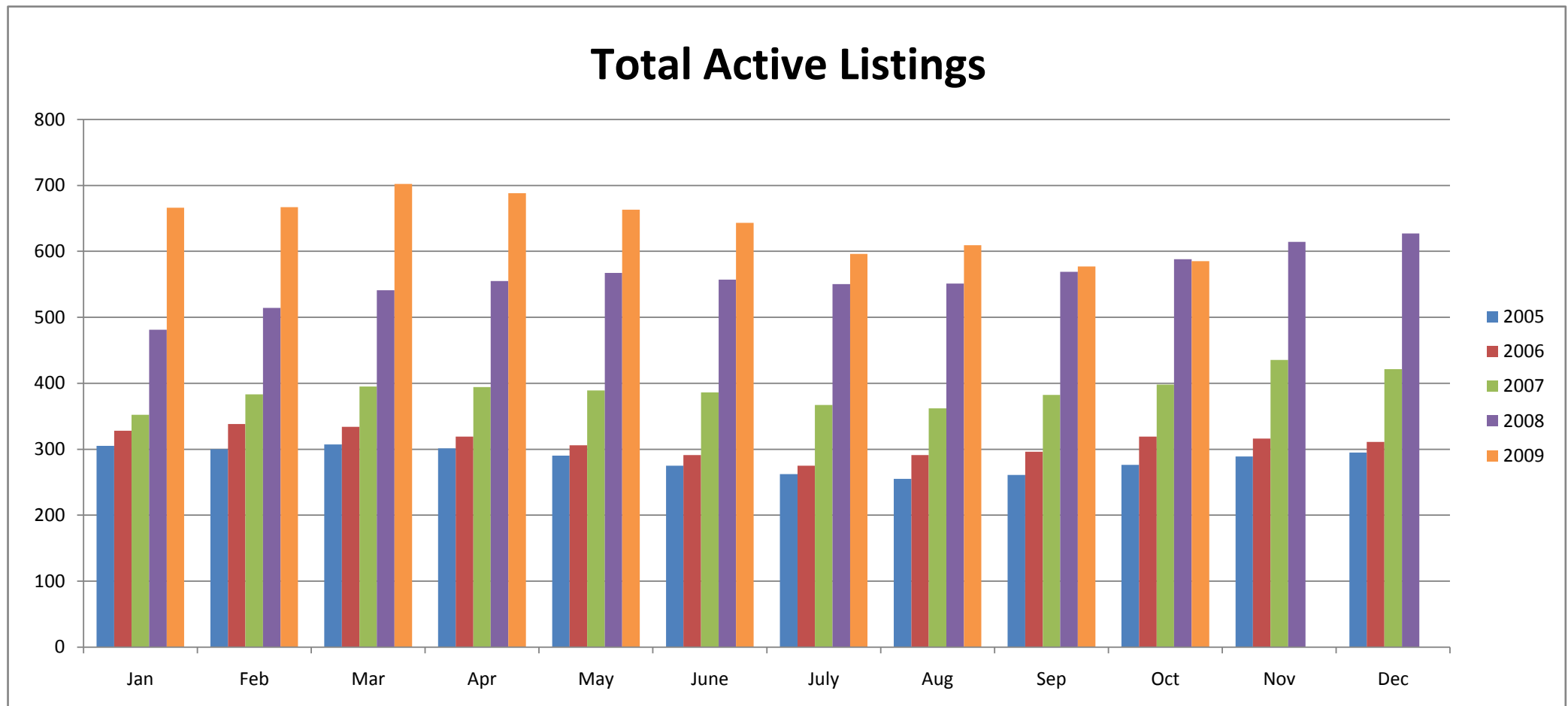
Average Price Sold

	Jan	Feb	Mar	Apr	May	June	July	Aug	Sep	Oct	Nov	Dec	Annual Avg
2005	\$ 1,595,903	\$ 1,381,954	\$ 1,641,416	\$ 1,572,708	\$ 2,049,128	\$ 2,028,984	\$ 1,681,625	\$ 2,103,712	\$ 1,883,835	\$ 2,122,077	\$ 2,193,464	\$ 2,300,113	\$ 1,879,577
2006	\$ 2,166,218	\$ 1,827,431	\$ 2,402,054	\$ 2,138,880	\$ 2,951,822	\$ 1,701,537	\$ 1,772,725	\$ 3,006,118	\$ 2,613,180	\$ 2,526,064	\$ 2,464,522	\$ 2,597,060	\$ 2,347,301
2007	\$ 1,294,750	\$ 2,578,500	\$ 2,086,742	\$ 2,019,517	\$ 2,107,457	\$ 2,383,641	\$ 2,072,159	\$ 2,469,285	\$ 2,121,769	\$ 2,257,000	\$ 2,785,467	\$ 2,270,118	\$ 2,203,867
2008	\$ 2,278,333	\$ 1,951,000	\$ 2,198,438	\$ 1,680,147	\$ 2,275,829	\$ 2,167,618	\$ 1,947,619	\$ 1,689,097	\$ 1,445,636	\$ 2,157,000	\$ 2,334,792	\$ 1,370,632	\$ 1,958,012
2009	\$ 1,500,681	\$ 1,728,214	\$ 1,253,888	\$ 1,370,004	\$ 1,319,321	\$ 1,701,654	\$ 2,304,431	\$ 1,452,943	\$ 1,458,462	\$ 1,214,817			\$ 1,530,442

Data compiled from the Arizona Regional Multiple Listing Service.
All information provided is deemed reliable but is not guaranteed and should be independently verified.

Paradise Valley, Arizona Residential Sales Statistics

January 2005 - Present



Total Active Listings

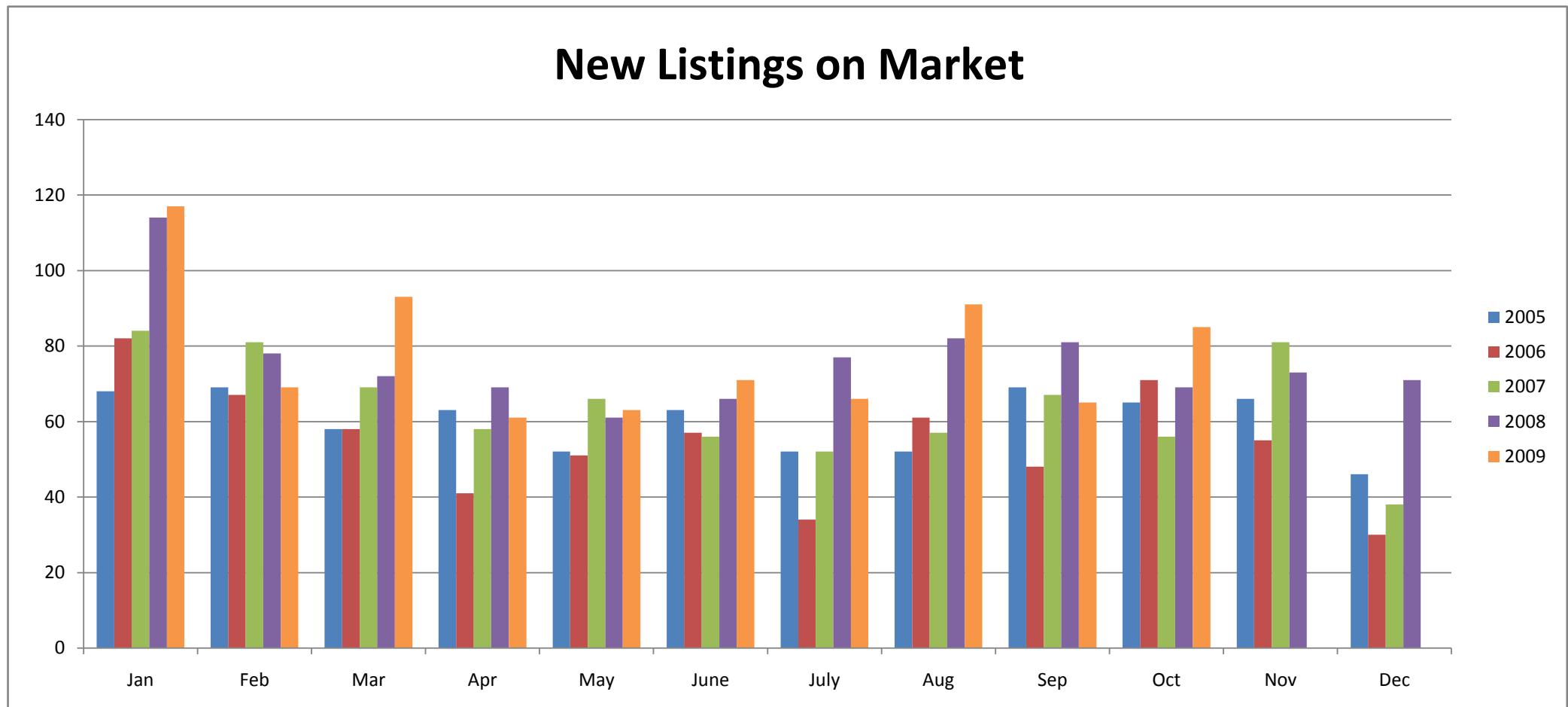
	Jan	Feb	Mar	Apr	May	June	July	Aug	Sep	Oct	Nov	Dec	Annual Totals
2005	305	300	307	301	290	275	262	255	261	276	289	295	3,416
2006	328	338	334	319	306	291	275	291	296	319	316	311	3,724
2007	352	383	395	394	389	386	367	362	382	398	435	421	4,664
2008	481	514	541	555	567	557	550	551	569	588	614	627	6,714
2009	666	667	702	688	663	643	596	609	577	585			6,396

Data compiled from the Arizona Regional Multiple Listing Service.

All information provided is deemed reliable but is not guaranteed and should be independently verified.

Paradise Valley, Arizona Residential Sales Statistics

January 2005 - Present



New Listings on Market

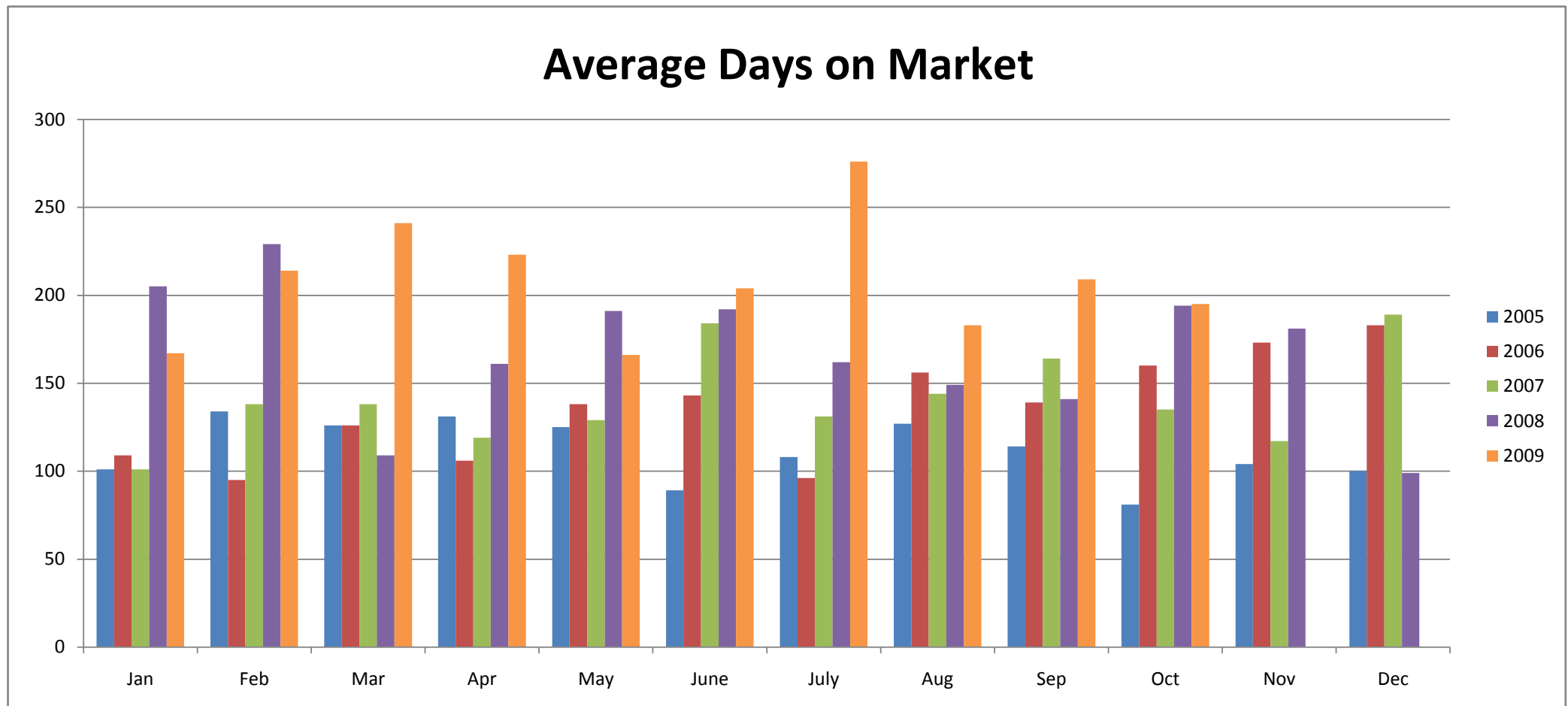
	Jan	Feb	Mar	Apr	May	June	July	Aug	Sep	Oct	Nov	Dec	Annual Avg
2005	68	69	58	63	52	63	52	52	69	65	66	46	60
2006	82	67	58	41	51	57	34	61	48	71	55	30	55
2007	84	81	69	58	66	56	52	57	67	56	81	38	64
2008	114	78	72	69	61	66	77	82	81	69	73	71	76
2009	117	69	93	61	63	71	66	91	65	85			78

Data compiled from the Arizona Regional Multiple Listing Service.

All information provided is deemed reliable but is not guaranteed and should be independently verified.

Paradise Valley, Arizona Residential Sales Statistics

January 2005 - Present



Average Days on Market

	Jan	Feb	Mar	Apr	May	June	July	Aug	Sep	Oct	Nov	Dec	Annual Avg
2005	101	134	126	131	125	89	108	127	114	81	104	100	112
2006	109	95	126	106	138	143	96	156	139	160	173	183	135
2007	101	138	138	119	129	184	131	144	164	135	117	189	141
2008	205	229	109	161	191	192	162	149	141	194	181	99	168
2009	167	214	241	223	166	204	276	183	209	195			208

Data compiled from the Arizona Regional Multiple Listing Service.

All information provided is deemed reliable but is not guaranteed and should be independently verified.